



Ilur clinker kit – Modification for easy sleeping

Several customer asked me to enlarge the width of the floorboard in order to be able to sleep on board with more comfort. For that purpose, we have modified the Ilur design. The width at the narrower point, aft of the centreboard case has been enlarged and is now 500 mm instead of 450 mm, and the main thwart is made removable.

The building process is unchanged. Only some plywood part have a different shape and an additional longitudinal bulkhead make a new watertight compartment at sides. It is recommended to add a dinghy type hatch for inspection.

Concerning timbers, the only change are as follows:

- Removable footrests : 25 x 50 x 1200 (total length for 8 parts)
- Aft deck : 150 mm wide instead of 140.

François Vivier Architecte Naval

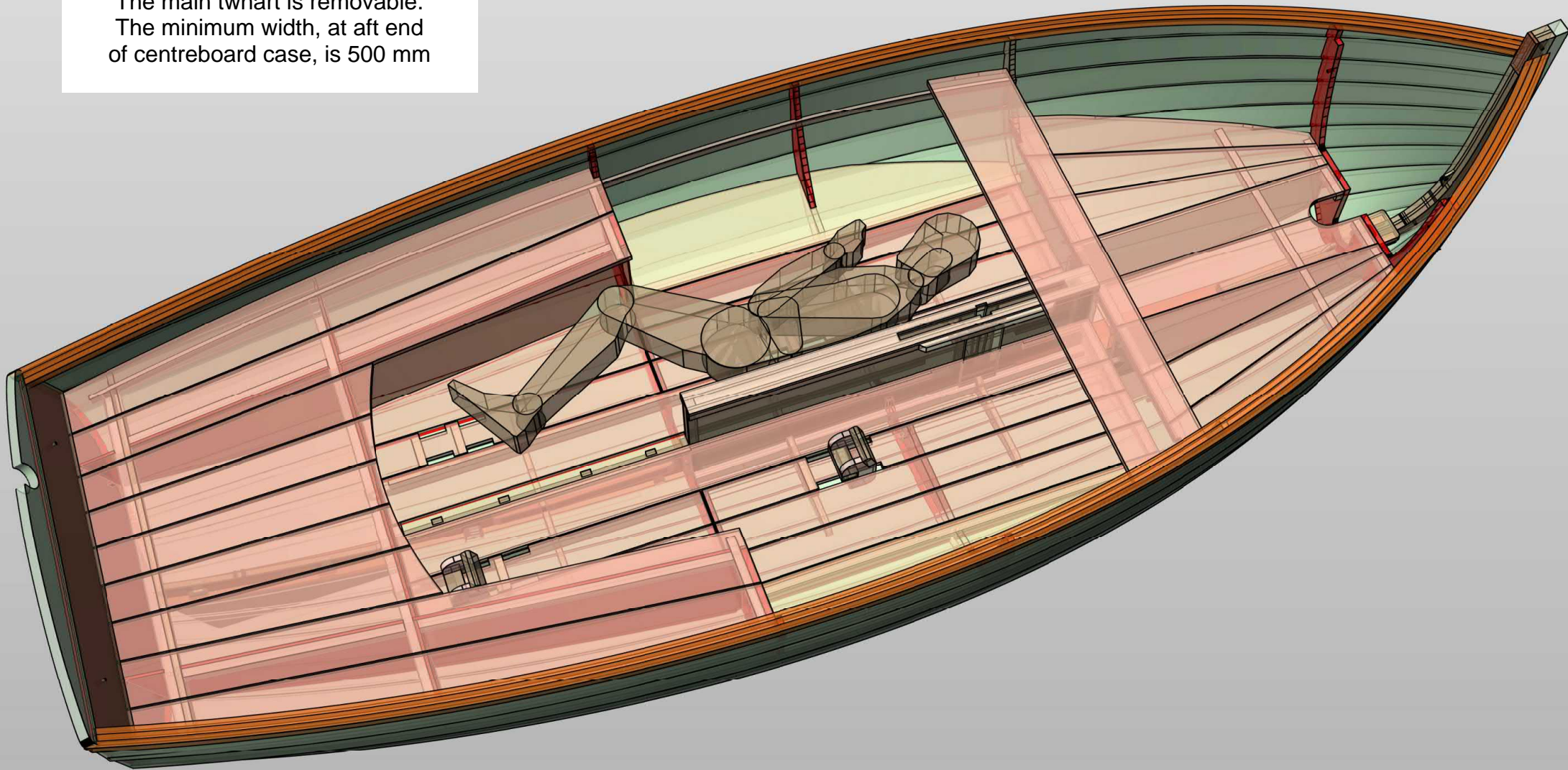
7, avenue des Courtils – 44 380 Pornichet - France

☎ : 33 (0)6 74 54 18 60 - E-mail : fr@vivierboats.com

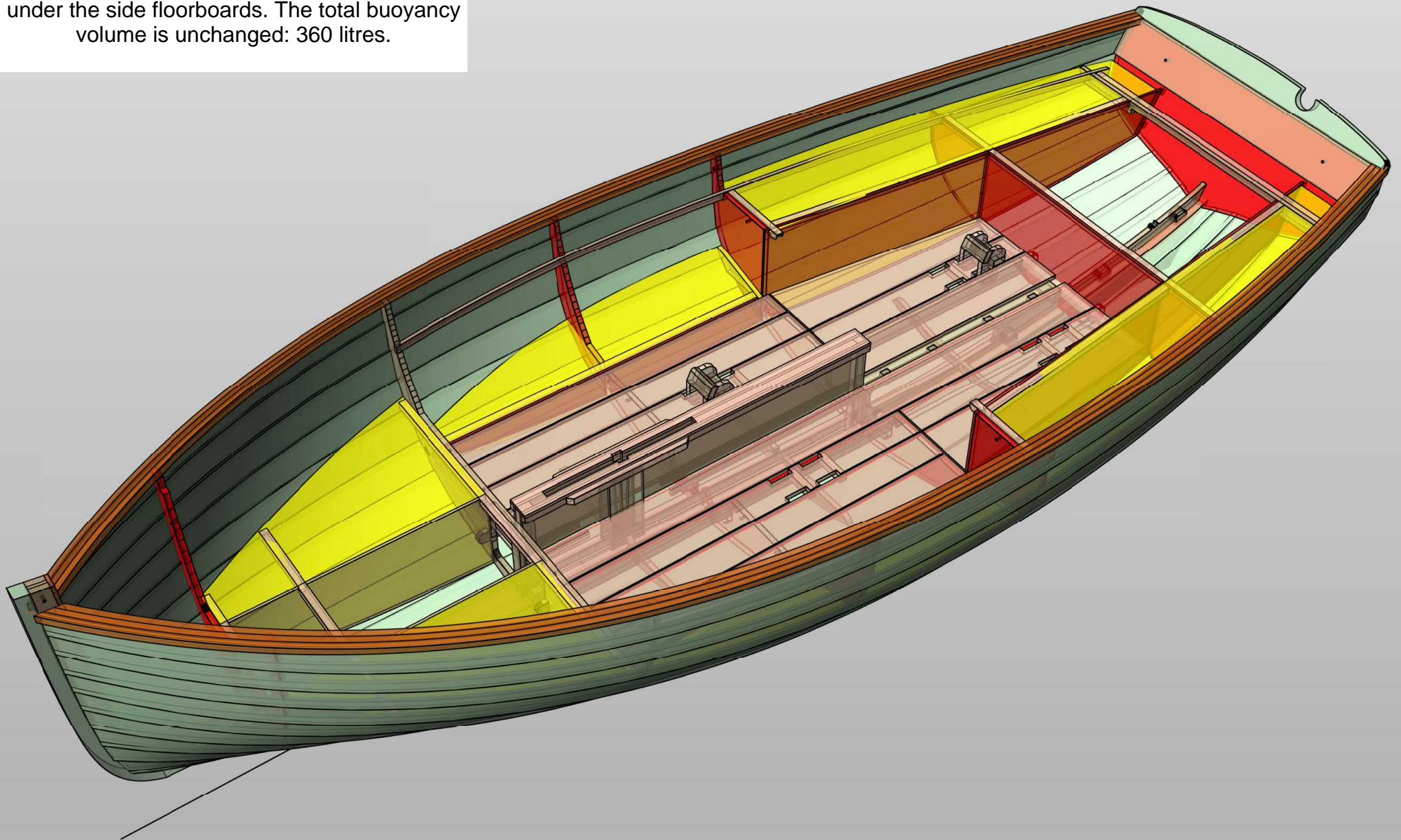
Internet : www.vivierboats.com

SARL au capital de 8 000 Euros – Siren : 451 456 669 RCS Saint Nazaire

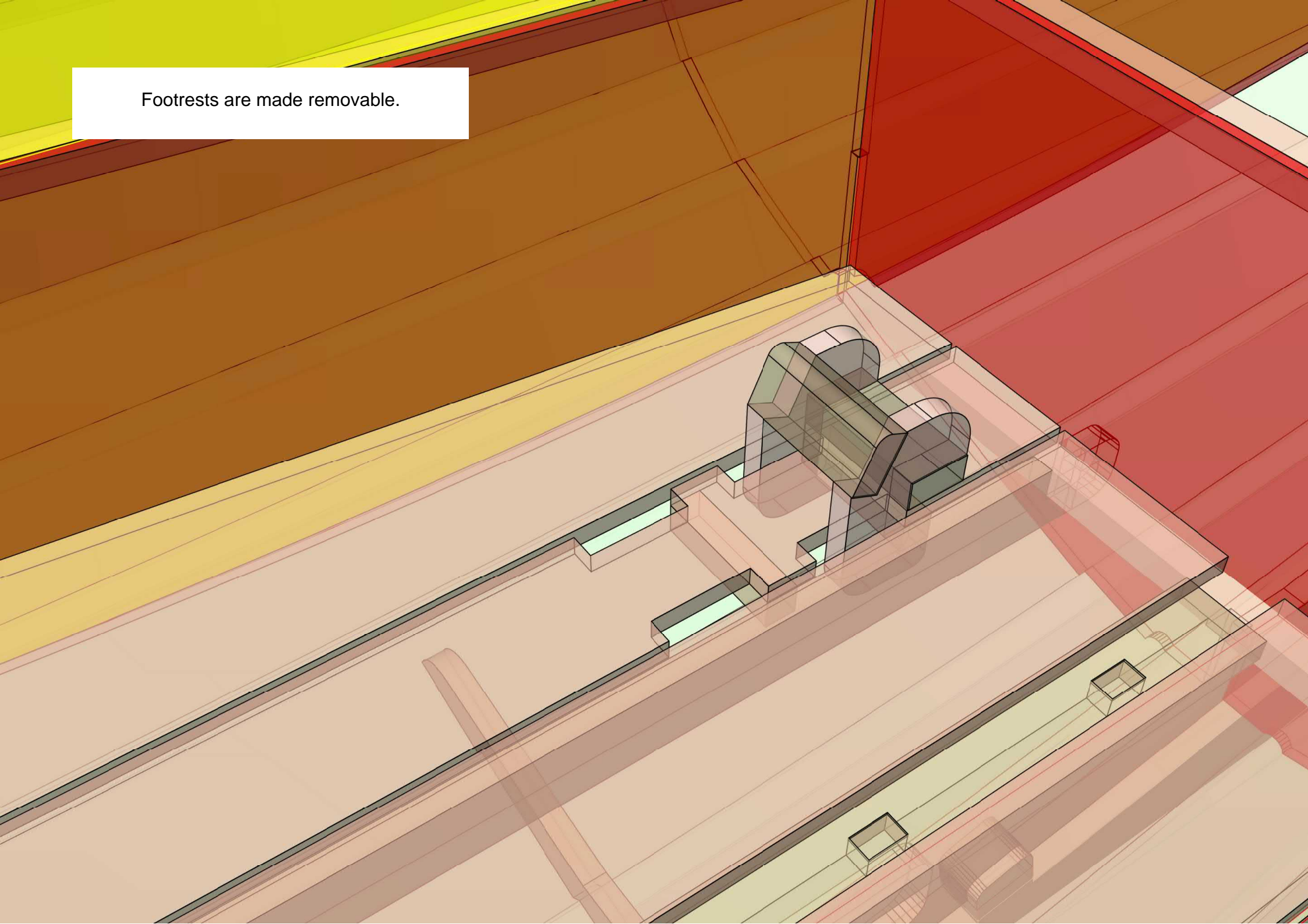
Ilur clinker kit version
Arrangement for easy sleeping.
The main thwart is removable.
The minimum width, at aft end
of centreboard case, is 500 mm



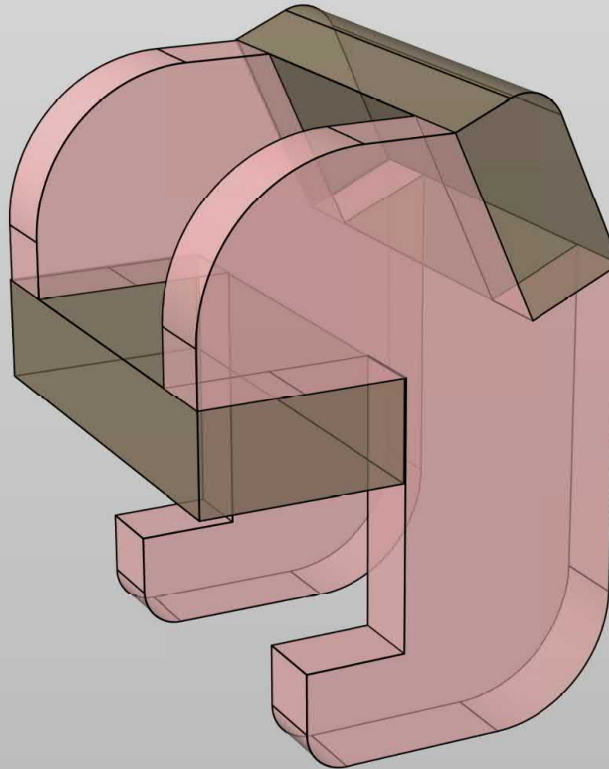
The width of the aft side buoyancy spaces are narrower and compensated by side buoyancy under the side floorboards. The total buoyancy volume is unchanged: 360 litres.



Footrests are made removable.



Footrests are built with two plywood cheeks
(CNC cut) and two timber parts,
each 25 x 50 x 110 mm.
25 x 25 cleats are screwed under the
floorboards at each footrest position.



This sketch shows all changed plywood parts.
A new set of CNC cutting files is now available.

